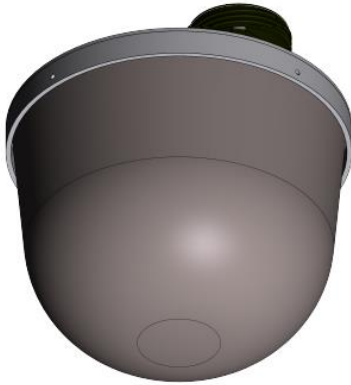
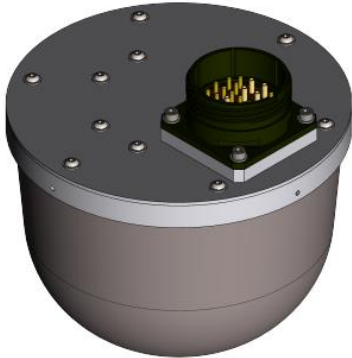


900 – 6000 MHz

VERSION: 1.0

Product Code: DF-A0355

SPECIFICATIONS:



Electrical: Antenna Array	
Frequency Range	900 – 6000 MHz
Number of bands	1
Channels per band	4
Polarisation	Vertical
DF method(s)	Correlative DF
Characterisation / manifold	Generic table provided (Specific table on request)
Azimuth	360°
Elevation	90° (horizon) - 120°
Signal Polarisation	Vertical
RMS accuracy	See graph below
OMNI Output	No
Nominal input impedance	50 Ω
Electrical: Integrated RF amplification and noise source	
Frequency Range	900 – 6000 MHz
Control	USB2
Internal preamplification	20±2 dB gain (bypassable) <5 dB noise figure
Stored information	Serial number
Power supply	6-18 V DC
Power consumption	< 3 W
RF Calibration	RF chain calibration using integrated noise source
Mechanical:	
Dimensions (h x d)	100 mm (excl connector) x 150 mm TBC (incl connector) x 150 mm
Mass	< 650 g
Connector	TBC
Designed to meet the following specifications	
Environmental:	Designed for MIL-STD-810G
EMI:	Designed for MIL-STD-461F

PRODUCT DESCRIPTION:

The DF-A0355 is an ultra-compact, wideband correlative Direction Finding Array.

The low Size, Weight and Power (SWaP) of the array makes it ideal for manpack or UAV-mountable applications.

The DF-A0355 incorporates channel amplification with low internal noise figure as well as a noise source for RF chain calibration.

PRODUCT FEATURES:

- Light weight and compact
- Wideband performance
- Internal preamplifiers with RF chain calibration feature.

Drone mounted DF Antenna

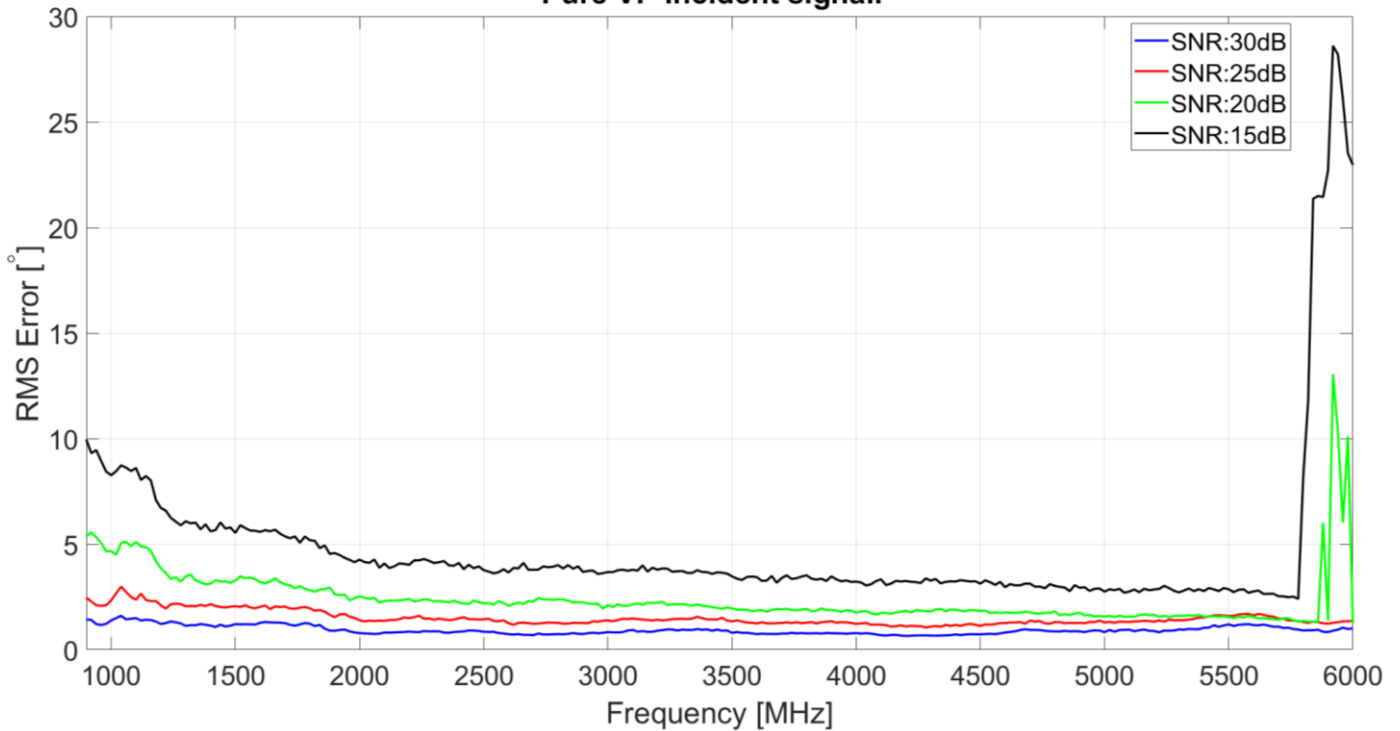
900 – 6000 MHz

Product Code: DF-A0355

VERSION: 1.0

DF-A0355 Accuracy:

DF-A0355 Accuracy for various SNRs
Pure VP incident signal.



DF-A0355 Sensitivity:

DF-A0355 Sensitivity - Required E-Field to obtain an RMS Estimation Error

